

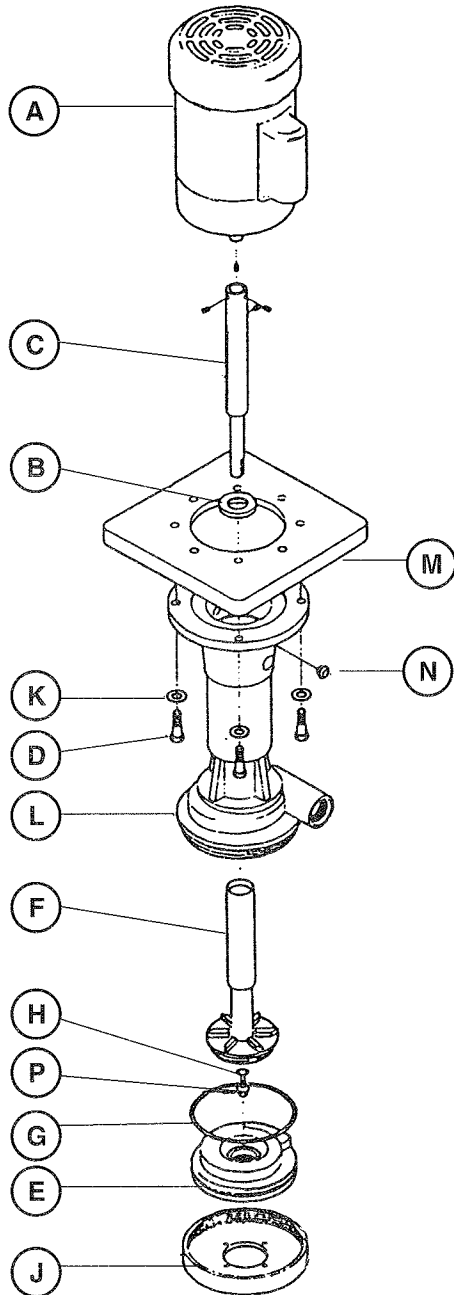


SERIES 'O' PLASTIC SUMP PUMP

MODELS OL100V/125V

PARTS LIST
PP-8980
MAY 1997

Refer to Bulletin PP-310, Operation and Service Guide PO-906
and Master Price List PF-1075.



ITEM	DESCRIPTION	PART NUMBER	
		OL100V	OL125V
A	Motor	See motor chart below	
B	Fume barrier	62-8121TF	
C	Shaft w/ setscrews - stainless steel Includes: setscrew HD (1 req'd) setscrew cup (3 req'd)	62-8133-1 62-0566 62-0567	
D	Bolt 3/8"-16 x 1-1/2" - SS(4 req'd)	62-3148	
E ¹	Suction cover	62-8103	62-8125
F ¹	Impeller - 3" dia. - 4" dia.	62-8107 -	- 62-8131
G	"O"-ring - Viton - EPDM	62-8123 VN 62-8123 EP	62-8128 VN 62-8128 EP
H	Lockdown "O"-ring - Viton - EPDM	62-8138 VN 62-8138 EP	
P ¹	Impeller lockdown	62-8135	
J ¹	Suction retainer	62-8104	62-8127
K	Washer, 3/8" - stn. steel (4 req'd)	62-3081	
L ¹	Body	62-8130	62-8132
M ²	Body mounting plate	62-8129	
N	Plug, weep hole (2 req'd)	62-8124	

¹ Add 'CP', 'PP', or 'PF' to part number to specify material.

² Add 'CP' or 'PP' to part number to specify material.

MOTORS FOR OL100V AND OL125V		
DESCRIPTION	PART NUMBERS	
	115-230V/1/60	230-460V/3/60
Motor - TEFC, 56C		
1/3 HP	62-1219	62-1689
1/2 HP	62-1226	62-1230
3/4 HP	62-1233	62-1237
1 HP	62-1240	62-1244
1-1/2 HP	62-1247	62-1251
2 HP	62-1254	62-1258
3 HP	-	62-1263
For 110-220V/1/50 or 220-380-440V/3/50 Hz motor, add -5 to part number		

See Flow Charts on back page.

